

P A T H W A Y S

博 思 會

學習支援服務

Learning Support Services



早期讀寫支援計劃

Early Literacy Support Programme (ELSP)



課餘支援計劃

After School Support Programme (ASSP)



暑期課程及短期課程

Summer Programme & Short Courses



家長教育講座及工作坊

Parent Education Seminars & Workshops

博思會 跨越學距好橋樑

Bridging the Learning Gap

香港註冊慈善機構 Registered charitable organization in Hong Kong (#91/6189)

BRIDGE 橋樑

詳情 Details



博思會 — 跨越學距好橋樑

博思會致力以專業及實証為本的教學方式，幫助有讀寫障礙的兒童，跨越困難，重拾學習的興趣與自信。

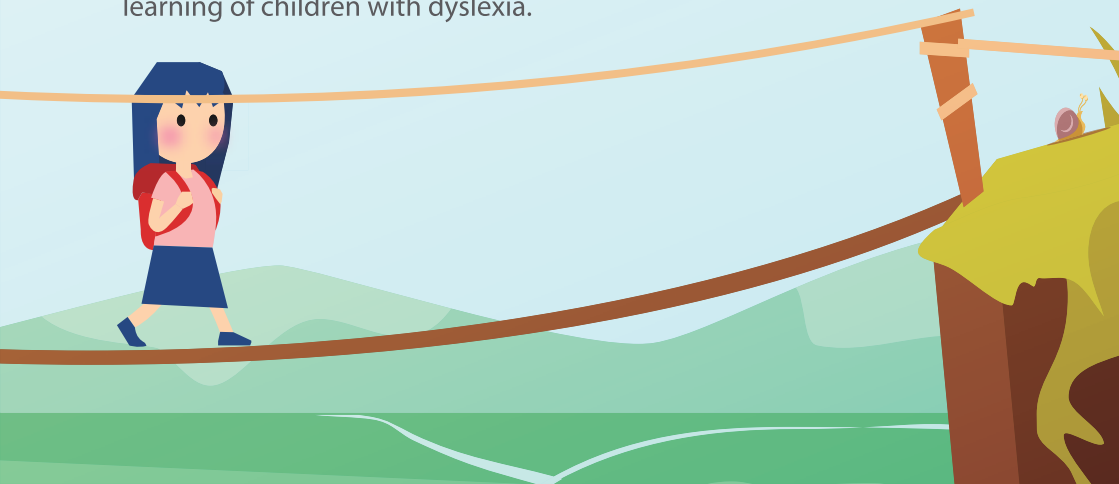
本會為註冊慈善機構，於2001成立，現於九龍及沙田設有兩間學習中心。我們擁有中、英、數及早期讀寫支援的專科教師團隊，並有多位與我們長期合作的臨床心理學家、教育心理學家、職業治療師及言語治療師作為專業夥伴，每年為數以百計的讀寫障礙學生，於課餘或校內提供適切和持續的學習支援、專業評估及治療服務。此外，本會亦定期舉辦家長講座活動，與公眾分享有關讀寫障礙的最新知識及教與學的心得。



The Pathways Foundation — Bridging the Learning Gap

The Pathways Foundation (“Pathways”) strives to help children with dyslexia to bridge the learning gap, rekindle their interest in learning, and build self-confidence through professional and evidence-based intervention programmes.

Established in 2001, we are a registered charitable organization in Hong Kong, currently operating two learning centres in Kowloon and Shatin. Our team consists of specialized subject teachers of Chinese, English, Mathematics and Early Literacy Support, as well as allied professionals including clinical psychologists, educational psychologists, occupational therapists and speech therapists. They collaborate to serve hundreds of students with dyslexia each year through individualized and continued after-school or in-school intervention programmes, along with professional assessments and therapy services. In addition, we organize regular parent seminars and activities to share with the public current knowledge on reading difficulties, and insights into the teaching and learning of children with dyslexia.



SERVICES 服務

詳情 Details



早期讀寫支援計劃

Early Literacy Support Programme (ELSP)

博思會本著「早期識別、盡早支援」的信念，致力服務有讀寫障礙傾向的學前幼兒，利用由本會團隊研發的《繪本童思》——綜合繪本閱讀及語文遊戲的學前幼兒語文課程，由淺入深編排學習內容，讓幼兒透過繪本及相關的遊戲活動，增進語言理解並認識文字，循序漸進地建立讀寫的基礎能力。本會老師亦會按需要安排小一及小二讀寫障礙學生修讀此支援計劃作過渡性學習。



Pathways advocates “early identification and early support”, and is committed to servicing pre-school children at risk of dyslexia. Our team researched and developed the “Pathways Pre-school Chinese Programme”, a curriculum that integrates picture books reading and language games for pre-school children. With a gradual increase in difficulty, the curriculum helps to build up a child’s language comprehension and vocabulary through the use of picture books and game activities, helping the child to improve reading and writing abilities. At times, our teachers may also arrange Primary One and Primary Two students with dyslexia to enroll in this programme for bridging support if necessary.



詳情 Details



課餘支援計劃 After School Support Programme (ASSP)

課餘支援計劃主要為就讀中小學的讀寫障礙學生提供中文、英文及數學專科學習支援。課程內容及教導方法以實証為本作基礎、提升學習動機及興趣為首要。為提高學習成效，學生需經學科評估，有助老師了解學生實際情況。每年學期結束前亦會進行課後評估，並透過家長日，加強與家長們的溝通，了解學生的學習進度。

九龍學習中心之課餘支援計劃為香港公益金贊助。

The After School Support Programme offers learning support in Chinese, English and Mathematics for students with dyslexia in primary and secondary schools. The course content and learning methods are evidence-based, aiming to enhance learning motivation and interest. To improve learning effectiveness, new students go through a pre-assessment so that our teachers understand the actual condition of the students. At the end of the school year, a post-assessment will also be conducted to monitor progress, and the meeting during Parent's Day helps to strengthen communication with parents, focusing particularly on the learning progress of their children.

The After School Support Programme provided in Kowloon Pathways Learning Centre is sponsored by The Community Chest of Hong Kong.



暑期課程及短期課程 Summer Programme & Short Courses

暑期是「鞏固基礎 發展潛能」的好時機，博思會每年均舉辦暑期課程，使同學善用餘暇。除了專科支援外，亦鼓勵發掘個人興趣，提供課程如攝影、多元創意及表達藝術、視覺藝術、舞台話劇及魔術戲法等等。此外，暑假期間亦設有親子工作坊，使家長們認識中英數各方面的有效學習方法及技巧。

此外，為了讓部份正在等候排班的學生盡早接受學科支援，老師們亦會在學校假期間安排一些短期課程予他們，以助提升其學習興趣及自信。



Summer is a great time to consolidate one's learning and develop one's potential. Pathways offers a Summer Programme which encourages students with dyslexia to fully utilize their holidays to strengthen their academic learning, as well as to explore their interests in areas such as photography, multi-dimensional creativity and expressive arts, visual arts, stage performance and magic tricks. Moreover, we also offer Parent-Child Workshops in which parents are introduced effective methods and skills in handling Chinese, English and Mathematics learning.

In addition, our teachers may arrange Short Courses to students who are on the waiting list for class arrangement. This way they can receive learning support as soon as possible, helping to raise their interest in learning and boost their confidence.



家長教育講座及工作坊 Parent Education Seminars & Workshops

博思會每年均為家長舉辦一系列家長教育講座及工作坊，以提升公眾對讀寫障礙的認識與接納，並提供與不同專家交流的機會。為方便家長參與，講座及工作坊多數於平日晚上或週末進行，亦會因應需要提供實時網上學習。

Pathways organizes a series of parent education seminars and workshops every year, in order to raise public awareness and acceptance towards dyslexia, as well as to provide interaction opportunities with various experts. To facilitate parents' participation, most seminars and workshops are held on weekday evenings or weekends, and real-time online learning will be provided as needed.



FAQ 問題

博思會的課程和其他機構提供的有何分別？

博思會透過一對一或小組支援，專注於閱讀和寫作發展及針對性的輔導。課程焦點並非為日常家課或學校考試補習，而是跟隨學生成長的需要，處理其閱讀和寫作需求。另外，本會亦為有經濟困難之家庭提供學費減免資助。

要在博思會訓練多久，才能跟上學校進度，或改善讀寫障礙情況？

學習閱讀和寫作，在不同的階段有不同的要求。對於發展性閱讀障礙，學生在不同班級，便需要不同的技能的支援；例如從認字到閱讀理解和文本構成。學生平均報讀兩至三年，有些更一直讀至DSE畢業。師生間的良好關係及學生的進度，有效地支援學業表現及情緒發展。

What is the difference between the courses offered by Pathways and those from other organizations?

Pathways focuses on reading and writing development and remediation through one-on-one or small group intervention. Our focus is not on homework or examination tuition. Instead, we work together with our students to help them deal with the increasing demands in reading and writing as they progress in school. In addition, we also offer fee subsidy to assist families in financial need.

With Pathways' training, how long does it take for a student to catch up, or see improvement in his/her condition?

Different stages of reading and writing learning bring along different needs. For developmental dyslexia, students require support in different skills when they are in different levels, from word recognition to reading comprehension and textual composition. On average, our students stay with us for about 2-3 years, while some stay until DSE graduation. The good teacher-student relationship and continuous progress are important for academic improvement and emotional well-being.

心聲 VOICES

感謝博思會全體員工於小兒接受服務期間的**協助及教導**。在這兩年間，中心負責教導小兒的每位老師相當專業，他們以**細心耐性及持續鼓勵的態度**引導學生，把學生從害怕學習的感覺變得**相信自己能力是做得到的**，令他**保持學習態度**。

Thank you to all staff of Pathways for their **assistance and guidance** to my son during the time he received service here. During the two years, every teacher who taught him at the in the centre was very professional. They guided him with **patience and continuous encouragement**. From fear of learning to **believing in his ability**, my son was motivated to stay **learning positively**.

冠峰家長
Kwun Fung's parents

能**提醒**父母自己對孩子直接**溝通及用愛支持**。

Can **remind** parents to communicate directly with their children and **support them with love**.

一位家長工作坊參加者
A parent workshop participant

可以深入**了解**到讀寫障礙兒童的**特質**和幫助他們的**方法**。

I can gain in-depth **understanding** about the characteristics of children with dyslexia and the **ways** to help them.

家長講座參加者一史小姐
A parent seminar participant – Miss Si

小兒進科不經不覺已在貴會補習英文和數學超過八年了，小兒的英文和數學成績和學習態度都有所**提升**和**進步**。我和太太亦經常參加貴會的講座，實在**獲益良多**，希望貴會能繼續你們的工作。非常感謝。

My son Chun For has been studying English and Mathematics at Pathways for more than eight years. His academic results in English and Mathematics, as well as his learning attitude have been **improved**. My wife and I often participated in the seminars of Pathways and have **benefited** a lot. I hope Pathways can continue its work. Thank you very much.

進科爸爸
Chun For's father



P A T H W A Y S

博 思 會

需要專業意見嗎？若您的孩子遇到
閱讀及寫字困難，歡迎與我們聯繫。

Seeking professional advice? Please talk
to us if you find that your child is facing
reading and writing difficulties.

聯絡我們
CONTACT US



博思會學習中心（九龍）

Pathways Foundation Learning Centre (Kowloon)

九龍旺角新填地街470號海島中心一樓1-3室
Unit 1-3, 1/F, Island Centre, 470 Reclamation Street
Mong Kok, Kowloon

T : 2870 1377

F : 2870 1779

博思會學習中心（沙田）

Pathways Foundation Learning Centre (Shatin)

新界沙田顯徑邨顯富樓地下
G/F, Hin Fu House, Hin Keng Estate, Shatin, N.T.

T : 3105 2311

F : 3105 1414

www.pathways.org.hk

info@pathways.org.hk

www.facebook.com/pathwayshk

www.instagram.com/thepathwaysfoundation

港鐵顯徑站現已開通，來往更方便！

前往A出口

向巴士總站方向直上，步行約3分鐘



MTR Hin Keng Station is now open!

Go to Exit A

About a 3-minute walk up after the bus terminal

會員機構 Member of



香港公益金
THE COMMUNITY CHEST
會員機構 MEMBER AGENCY



報名表格
Application Form



收費表
Tariff Table



註冊慈善機構號碼 Registered Charitable Institution No. 91/6189