



P A T H W A Y S

博 思 會

# 專業甄別及評估服務

## Professional Screening & Assessment Services



學前及小學讀寫障礙甄別測驗服務  
Kindergarten & Primary Screening Service (KPSS)



教育心理學支援服務  
Educational Psychology Support Service (EPSS)



臨床心理學支援服務  
Clinical Psychology Support Service (CPSS)

# 博思會 跨越學距好橋樑

## Bridging the Learning Gap

# BRIDGE 橋樑

詳情 Details



## 博思會 — 跨越學距好橋樑

博思會致力以專業及實証為本的教學方式，幫助有讀寫障礙的兒童，跨越困難，重拾學習的興趣與自信。

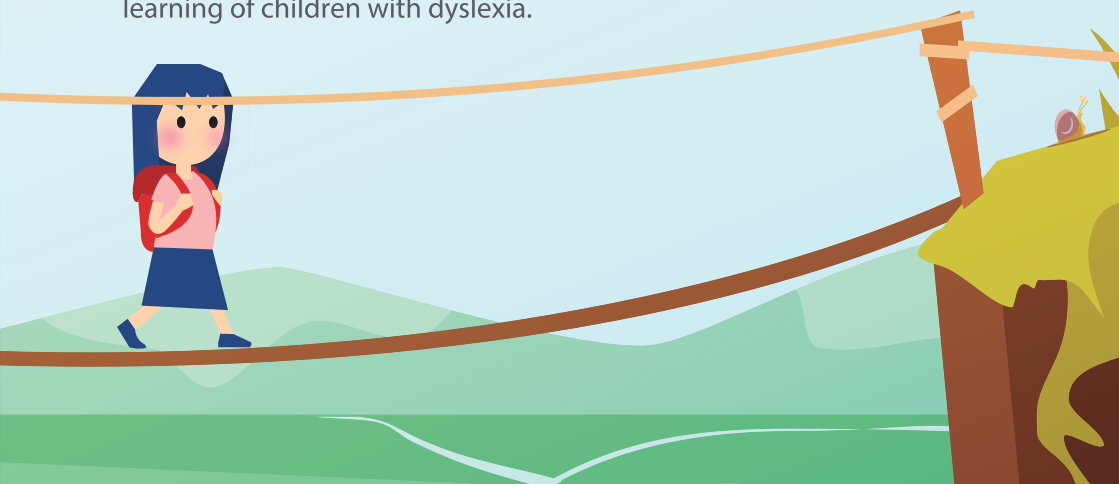
本會為註冊慈善機構，於2001成立，現於九龍及沙田設有兩間學習中心。我們擁有中、英、數及早期讀寫支援的專科教師團隊，並有多位與我們長期合作的臨床心理學家、教育心理學家、職業治療師及言語治療師作為專業夥伴，每年為數以百計的讀寫障礙學生，於課餘或校內提供適切和持續的學習支援、專業評估及治療服務。此外，本會亦定期舉辦家長講座活動，與公眾分享有關讀寫障礙的最新知識及教與學的心得。



## The Pathways Foundation — Bridging the Learning Gap

The Pathways Foundation (“Pathways”) strives to help children with dyslexia to bridge the learning gap, rekindle their interest in learning, and build self-confidence through professional and evidence-based intervention programmes.

Established in 2001, we are a registered charitable organization in Hong Kong, currently operating two learning centres in Kowloon and Shatin. Our team consists of specialized subject teachers of Chinese, English, Mathematics and Early Literacy Support, as well as allied professionals including clinical psychologists, educational psychologists, occupational therapists and speech therapists. They collaborate to serve hundreds of students with dyslexia each year through individualized and continued after-school or in-school intervention programmes, along with professional assessments and therapy services. In addition, we organize regular parent seminars and activities to share with the public current knowledge on reading difficulties, and insights into the teaching and learning of children with dyslexia.



# SERVICES 服務

詳情 Details

## 學前及小學讀寫障礙甄別測驗服務 Kindergarten & Primary Screening Service (KPSS)



此服務是一項初步甄別測驗，由博思會專家，根據過往識別讀寫障礙學童的經驗而精心制訂，用於識別有讀寫障礙傾向的年幼學童，並根據測驗結果，在未有正式確診前，為學童及其家長提供及早的支援服務。

測驗服務對象為四歲或以上的學前幼童及小學學生，測驗內容會按學生學術程度而有所調整，過程由註冊教育心理學家或博思會資深老師主理。

KPSS is an initial screening assessment for detecting significant reading and writing problems in preschool children so that early support and intervention may be provided before more formal diagnostic assessments are available. It is carefully formulated by experts from Pathways, based on their past experience in identifying children with dyslexia.

Service targets are kindergarten and primary school students aged 4 or above. Different categories of ability test are used to assess children at various academic levels. The procedure is handled by our registered Educational Psychologist, or one of Pathways' experienced teachers.



詳情 Details



## 教育心理學支援服務

## Educational Psychology Support Service (EPSS)

此服務以「香港讀寫障礙及早識別量表」(HKDESS)作為評估工具，由資深註冊教育心理學家主理，為幼童進行讀寫障礙及早識別評估，以便向家長盡早作出支援輔導，並於學童入讀小一時，讓學校作出適時跟進。適合對象為就讀K2或K3，並年滿四歲零三個月的幼稚園學生。

此外，教育心理學家亦可因應學生在學校得到的支援、家校溝通及其他學習問題等，為家長提供諮詢服務。



Our senior registered Educational Psychologist makes use of “The Hong Kong Dyslexia Early Screening Scale” (HKDESS) to provide early identification assessment for dyslexia to support early counselling and timely follow up by schools when children enroll in primary schools. Service targets are students in K2 and K3, aged 4 years and 3 months or above.

In addition, our Educational Psychologist can also provide counselling service to parents with regard to matters on in-school intervention support, parent-school communication and other learning issues.



## 臨床心理學支援服務 Clinical Psychology Support Service (CPSS)

由資深註冊臨床心理學家主理，主要為六歲或以上的學生進行智力及讀寫障礙方面的評估。有關報告為政府及學校所承認。

為了讓讀障學生得到更全面的照顧，本會亦提供跟進服務，包括評估有關其他認知或學習問題、有可能並存的專注力及情緒行為問題、及家庭心理輔導等等。



Our senior registered Clinical Psychologist provides assessments on intelligence and dyslexia for students aged 6 years or above. The reports are recognised by the government and by schools.

To provide comprehensive care to students with dyslexia, we also provide follow-up services including additional assessments on other cognitive or learning conditions; potential attention, emotional or behavioural comorbidities; and family counselling.



## 博思會各甄別及評估服務一覽 Overview of the Screening and Assessment Services at Pathways

	學前及小學讀寫障礙甄別測驗服務 Kindergarten and Primary Screening Service (KPSS)	教育心理學支援服務 Educational Psychology Support Service (EPSS)	臨床心理學支援服務 Clinical Psychology Support Service (CPSS)
目的 Objective	初步瞭解幼兒是否有讀寫障礙傾向 Initial understanding of whether a child is at risk of dyslexia	透過瞭解孩子讀寫認知過程， 評估其日後被診斷為讀障礙的機會 Through understanding the cognitive process of literacy, evaluate the chance of the child being diagnosed with dyslexia in the future	全面性評估讀寫障礙； 若孩子被確診，報告將為政府及學校所承認 Comprehensive assessment on the child's dyslexic condition; if diagnosed, the report is recognized by the government and by schools
對象 Target	4歲或以上之學前及小學學生 Kindergarten or primary school students aged 4 or above	K2或K3學生，並年滿四歲零三個月 K2 or K3 students aged 4 years 3 months or above	小學及中學學生 Primary and secondary school students
評估人員 Assessors	資深教育心理學家或 博思會經驗老師 Senior Educational Psychologist or Senior Pathways teachers	資深教育心理學家 Senior Educational Psychologist	資深臨床心理學家 Senior Clinical Psychologist
需時* Duration*	約1小時 Approximately 1 hour	約1至1.5小時 Approximately 1 to 1.5 hours	約4至6小時 Approximately 4 to 6 hours
報告 Report	測驗摘要及解說 Test summary and verbal explanation	評估摘要及結果解說 Assessment summary and verbal explanation	評估結果、書面報告及解說 Assessment summary, written report and verbal explanation
費用 Fee	\$900	\$2,200	\$8,600 (初小/ Lower Primary) \$9,500 (高小及中學/ Upper Primary & Secondary)
博思會提供的 支援課程# Support Services from Pathways#	早期讀寫支援計劃及課餘支援計劃 Early Literacy Support Service (ELSP) and After School Support Service (ASSP)	早期讀寫支援計劃 Early Literacy Support Service (ELSP)	課餘支援計劃 After School Support Service (ASSP)

\* 視乎兒童接受測驗時的歲數及表現而異 Duration varies depending on the child's age and performance at the time of the test.

# 升讀小學及滿六歲後建議再進行「讀寫障礙評估」，以確認是否有「讀寫障礙」，以便可繼續於博思會接受學科支援，及於就讀學校申請調適安排。It is advisable for children to undergo an Assessment on Dyslexia after they start primary school and reach the age of six, in order to confirm if they are diagnosed with dyslexia, so that they can continue to receive academic intervention at Pathways, and to apply for special learning arrangements at school.



# FAQ 問題

**博思會的讀寫障礙評估報告是否獲得學校及教統局承認？**

博思會之「教育心理學支援」或「臨床心理學支援」評估服務，其報告均獲香港教育局及衛生署認可。學校及教統局將因應報告結果，決定該學生是否得到在校支援服務或考試調適等安排。

**博思會的甄別測驗及評估服務是否適用於以普通話學習的學生？**

由於博思會的甄別測驗及評估服務的評估工具，主要以母語及學習語言為粵語的本地學生之表現來制訂常模，未必能完全反映就讀於其他教學語言類別學校的學生之表現，故此所得之結果須小心解讀。

**Are Pathways' assessment reports on dyslexia recognised by schools and the Education Bureau (EDB)?**

The assessment reports from Pathways' "Educational Psychology Support Service (EPSS)" and "Clinical Psychology Support Service (CPSS)" are recognised by the EDB and the Department of Health. Schools and the EDB will consider whether the student will receive in-school remedial support or examination accommodation based on the results.

**Are Pathway's screening test and assessment services suitable for students who learn in Putonghua?**

The assessment tools of Pathway's screening test and assessment services are constructed and normed for children using Cantonese as native language and for studying in schools. They may not entirely apply to children in schools that use other languages as medium of instruction. Hence, results should be interpreted with discretion.





P A T H W A Y S

博 思 會

需要接受專業評估嗎？若您的孩子遇到  
閱讀及寫字困難，歡迎與我們聯繫。  
Seeking professional assessment? Please talk  
to us if you find that your child is facing  
reading and writing difficulties.

聯絡我們  
CONTACT US



博思會學習中心（九龍）

Pathways Foundation Learning Centre (Kowloon)

九龍旺角新填地街470號海島中心一樓1-3室  
Unit 1-3, 1/F, Island Centre, 470 Reclamation Street  
Mong Kok, Kowloon

T : 2870 1377

F : 2870 1779

[www.pathways.org.hk](http://www.pathways.org.hk)

[info@pathways.org.hk](mailto:info@pathways.org.hk)

[www.facebook.com/pathwayshk](https://www.facebook.com/pathwayshk)

[www.instagram.com/thepathwaysfoundation](https://www.instagram.com/thepathwaysfoundation)

博思會學習中心（沙田）

Pathways Foundation Learning Centre (Shatin)

新界沙田顯徑邨顯富樓地下

G/F, Hin Fu House, Hin Keng Estate, Shatin, N.T.

T : 3105 2311

F : 3105 1414

**港鐵顯徑站現已開通，來往更方便！**

前往A出口

向巴士總站方向直上，步行約3分鐘



**MTR Hin Keng Station is now open!**

Go to Exit A

About a 3-minute walk up after the bus terminal

會員機構 Member of



報名表格  
Application Form



收費表  
Tariff Table

